

# SmartLF Gx/GxT 42

25"  
42"  
54"

## LARGE FORMAT CCD SCANNERS

SmartLF Gx 42 wide format scanners are ideal for reprographics bureau, copyshops, graphic arts, designers, mapping, survey & GIS professionals.

JUST  
PLUG & PLAY  
WITH  
HIGH SPEED  
USB2



- 42" maximum image width/  
48" maximum document width
- Capable for all A0+ / E-size+ scan  
& copy jobs
- Wide colour gamut for graphic art  
& photographic applications
- High speed scans of black & white  
and colour technical documents
- 1200dpi optical resolution
- Thick media models

THREE versions available with standard  
and thick media options:

### Gx 42m/GxT 42m

captures wide dynamic range of b&w photos  
& CAD drawings at speeds up to 6"/s

### Gx 42c/GxT 42c

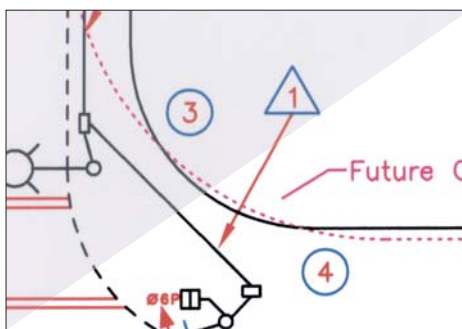
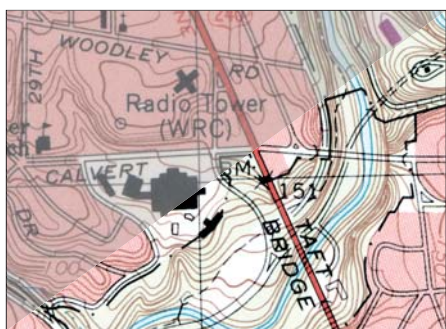
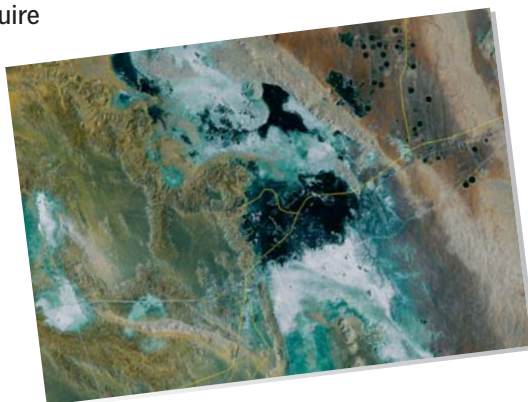
adds wide colour gamut scanning to  
the 42m with colour scan speeds up  
to 0.75"/s

### Gx 42e/GxT 42e

adds express wide colour gamut scanning  
at speeds up to 3"/s

SmartLF Gx 42 produces fast, high quality scans, copies or file distribution of large format photographs, satellite images, artwork, graphic designs, posters and any other documents that require a wide colour gamut and high dynamic range.

These 42" scanners will also capture accurately the finest details in maps, engineering drawings, blueprints, site plans, architectural renderings and many other technical documents in monochrome or colour at resolutions from 100 up to 9600dpi. Original images can be captured off media from 6", up to 48", wide by any length, and the GxT models provide motorised thick media scanning of mounted originals up to 0.8" (2cm) thickness



Clear, simple controls  
and easy access for  
cleaning



The imaging system at the heart of the SmartLF Gx 42 consists of five, ultra-compact, digital CCD camera units (DCUs). Each DCU is capable of scanning images at 1200 x 600dpi optical input resolution (max 600 x 600dpi optical output by the scanner) and captures 48-bit colour or 16-bit pan-chromatic monochrome data. The CCDs have 10,800 pixels of RGB triplets plus pan-chromatic monochrome, a total of 216,000 pixels in the scanner.



**Colortrac**  
Our Business is Your Image

The SmartLF Gx 42 & GxT 42 (thick media) scanner models are available in three performance levels with features optimised for different applications. If your requirements change, the m and c models can be upgraded on-site at your premises quickly and easily using our simple scanner upgrade process via email.

		● standard	○ optional	— not supported
Feature	SmartLF Gx / GxT wide format scanner model:	m	c	e
Maximum image width	42in (106.7cm) Image length: not limited by scanner	●	●	●
Maximum media width <sup>1</sup>	48in (121.9cm) Thickness: Gx 0.02in (0.5mm) / GxT 0.8in (20mm)	●/○	●/○	●/○
Scan speeds <sup>2</sup> in/sec	24-bit RGB colour @ 200dpi (not Turbo Mode - see note) <sup>3</sup> 8-bit greyscale & monochrome @ 200dpi (not Turbo Mode - see note) <sup>3</sup>	— 6.00	0.75 6.00	3.00 6.00
Scan accuracy <sup>3</sup>	+/-0.1% +/-1 pixel	●	●	●
Optical resolution	Dots per inch (dpi) (input 1200 x 600 / output 600 x 600)	1200	1200	1200
Extended resolution <sup>4</sup>	Linear interpolation from 100 to 9600dpi in 1 dpi steps	9600	9600	9600
Scan modes	16.7 million colour RGB (24-bit) 256 & 16 colour RGB adaptive indexed colour palette (8-bit & 4-bit) 256 level greyscale (8-bit) Black & White (1-bit)	— — ● ●	● ● ● ●	● ● ● ●
Digital image processing (Colortrac software options provide a comprehensive range of 'post scan' image processing filters and tools)	2D Intelligent Adaptive Thresholding (IAT) (1-bit mode) Fixed Threshold Black & White (1-bit mode) Dynamic Normalisation Application (DNA) with 16-bit super sampled data	● ● ●	● ● ●	● ● ●
Colour space	Normalised/linearised Raw RGB data	—	●	●
Colour image processing	Gamma, brightness, black & white point adjustment	—	●	●
Advanced 2+3 wheel-drive	Dual, precision ground drive rollers	●	●	●
Active Paper Transport [APT]	Dual, all-wheel-drive contour rollers with high grip rubber tyres Single, belt driven pressure roller for active media control during scans Accurate, zero maintenance optical media sensors & automatic media size detection, centre or side justified media positioning	● ● ●	● ● ●	● ● ●
Motorised Thick Media [MTM] adjustment (GxT range)	Adapts the APT for media up to 20mm (0.8in) thick Automatic detection of optimum grip roller pressure Simple operation from scanner control panel at the touch of a button	○ ○ ○	○ ○ ○	○ ○ ○
All digital image sensor technology	5 x quadri-linear CCDs each with 10,800 pixels (RGB + monochrome) 5 x ultra-compact self-contained digital camera units (DCUs) 216,000 pixels (RGB triplets + panchromatic B&W) 48-bit primary point colour image capture 16-bit primary point greyscale image capture Panchromatic Black & White	● ● ● — ● ●	● ● ● ● ● ●	● ● ● ● ● ●
Light source	Twin high efficiency T5 fluorescent lamps of 5/8" (1.6cm) diameter	●	●	●
Optics	5 x micro lens with integral infra red filter	●	●	●
User status & One Touch operation	LCD panel (scanner status, mode & settings), stop, forward & rewind Scan/Copy buttons Open/Close buttons (GxT range)	● ● ○	● ● ○	● ● ○
Scanner maintenance and user replaceable parts	Customer installable, plug 'n' play scanner Precision media calibration with DNA 16-bit super sampled data Chemically treated, scratch resistant scan glass	● ● ●	● ● ●	● ● ●
SmartLF software (included)	Colortrac SmartLF ready to run software with: Scan-to-file with real time image viewer Scan-to-copy with real time image viewer Scan-to-email with real time image viewer Scanner drivers, TIFF, JPEG, PDF file formats	● ● ● ● ●	● ● ● ● ●	● ● ● ● ●
Interface (included)	USB2 / 2m USB2 cable / local power cable / rear media supports Windows Image Acquisition (WIA) / Still Image Interface (STI)	● ●	● ●	● ●
Dimensions & weight	56.7in wide x 6.7in high x 14.4in deep (144 x 17 x 37cm) 102Lbs (46kg)	●	●	●
Power requirements	120~240VAC autosensing, 50~60Hz, 240VA (scanning)	●	●	●
Scan software	ScanWorks ~ professional scan-to-archive & post scan image processing	○	○	○
Copy software	CopySmart ~ professional scan-to-print with IT8 colour matching	○	○	○
EDC software	ISIS™ driver ~ connect seamlessly to EDM systems & database	○	○	○
Scanner accessories	Floor stand 30.7in high x 21.7in deep (78 x 55cm) 29Lbs (13kg) Paper catch basket (floor stand is required) PC & LCD monitor mounting kit (floor stand is required) Universal repro stand with PC & LCD monitor mounting kit 75in wide x 61in high (max incl. scanner) x 29in deep (189 X 155 x 74cm) 113Lbs (51kg), max permissible printer height 49in (125cm)	○ ○ ○ ○	○ ○ ○ ○	○ ○ ○ ○

[1] Media wider than 43in may exhibit some degradation in the image. [2] The scan rate is proportional across the full range of resolutions supported by the scanner. Actual scan times will depend on the host system performance. Quoted top speeds decrease for originals wider than 24in and are not guaranteed for all media types. [3] Turbo Mode speeds can be twice as fast as regular non-turbo speed ratings but offer virtually no image quality gains over scans made at half the quoted resolution. Turbo mode scanning uses digital software interpolation to double the resolution in the paper direction to simulate higher resolution scanning. [4] The quoted scan accuracy is valid for media up to 0.5mm thick and may vary depending on the operating environment and the type & thickness of media. Colortrac measures accuracy by scanning a paper original printed with a square target. The pixel co-ordinates of the target image are measured and compared with the known dimensions of the original. SmartLF Gx 42 scanners are tested at 20°C +/- 3°C, 60% +/- 10% RH. [5] The maximum resolution selectable for an image is limited by the file format specified & the available disk space. [Colortrac recommends Intel Pentium, Core Duo, Core 2 Duo, HT (Hyper-Threading) and AMD Athlon Dual Core processors, at least 512MB RAM, USB2 and Windows™ XP Home, Windows™ XP Professional or Windows™ Vista operating systems. SmartLF drivers support 32-bit and 64-bit processor architectures. Contact your supplier for advice on the optimum system configuration for your application.] [Colortrac SmartLF Gx 42 scanners comply with CE, FCC, UL and RoHS standards and regulations.] Colortrac Ltd makes no warranty of any kind with respect to the information contained in this document and reserves the right to change specifications without notice. Colortrac and Smart LF® are trademarks of Colortrac Ltd. All other trademarks are the property of their respective owners. Copyright © 2008 Colortrac Ltd. COLORTRAC SMARTLF WIDE FORMAT SCANNERS ARE DESIGNED AND MANUFACTURED BY COLORTRAC.